



**Lead a luxury life**  
QUARTZ DESIGNS USED FOR KITCHEN  
COUNTERTOPS AND VANITY TOPS

**STONCWAY**

**Lead a luxury life**  
QUARTZ DESIGNS USED FOR KITCHEN  
COUNTERTOPS AND VANITY TOPS

**STONCWAY**

ZHAO QING AIBO NEW MATERIAL TECHNOLOGY CO.,LTD

Add:NO.1F, CHINA CERAMICS THEATER, CHINA  
CERAMICS INDUSTRY

HEADQUARTERS, NO.68, WEST JIHUA ROAD,  
FOSHAN 528000, GUANGDONG, CHINA

Factory Add:JINTAO INDUSTRY ZONE, JINLI

TOWN, GAOYAO DISTRICT, ZHAOQING

526000, GUANGDONG, CHINA. POST CODE:528000

E-MAIL:quartz@aibostone.com

TEL/FAX:0086 75783550806

WEBSITE:www.aibostone.com



EXTRAVAGANT  
From STONCWAY

EXT...  
...RAV  
...AG...  
ANT...

LEAD A  
LUXURY LIFE



DESIGN FROM STONCWAY





EXTRAVAGANT  
From **STONCWAY**

## INDEX

---

- |                                       |  |
|---------------------------------------|--|
| <b>04</b> BLANCO GLACIERS<br>AB 8010F | <b>24</b> OCEAN<br>AB 6019             |
| <b>05</b> GOLD PYROXENE<br>AB 8010G   | <b>25</b> FLYING SWALLOW<br>AB 6183    |
| <b>08</b> ICE JADE<br>AB 8010H        | <b>28</b> BLANCO SHITAKE<br>AB 6025    |
| <b>09</b> ROSETTE NEBULA<br>AB 8020L  | <b>29</b> STATUARIO<br>AB 3030         |
| <b>12</b> GRIS ELEGANT<br>AB 8022L    | <b>32</b> MAPLE FOREST<br>AB 3129      |
| <b>13</b> CALYPSO<br>AB 6088L         | <b>33</b> 37° PREMIUM GRAY<br>AB 3120  |
| <b>16</b> SNOW FLAKES<br>AB 6014L     | <b>36</b> 18° STANDARD GREY<br>AB 3137 |
| <b>17</b> ICELAND<br>AB 8108          | <b>37</b> PANDA WHITE<br>AB 9001       |
| <b>20</b> BLANCO NEBULOUS<br>AB 8016  | <b>40</b> MORIE<br>AB 9002             |
| <b>21</b> CALACATTA CRACK<br>AB 8008  | <b>41</b> CROATIA GREY<br>AB 6196      |



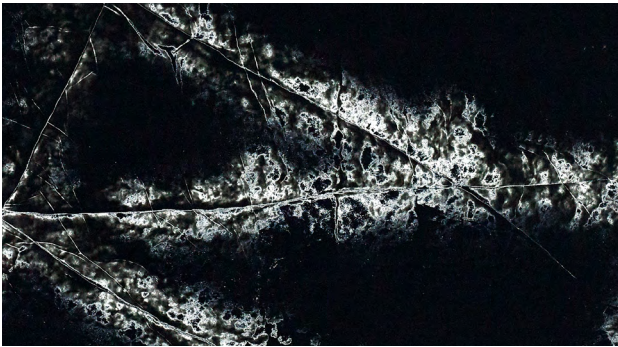
**BLANCO GLACIERS**

**AB 8010F**

SURFACE:Polished

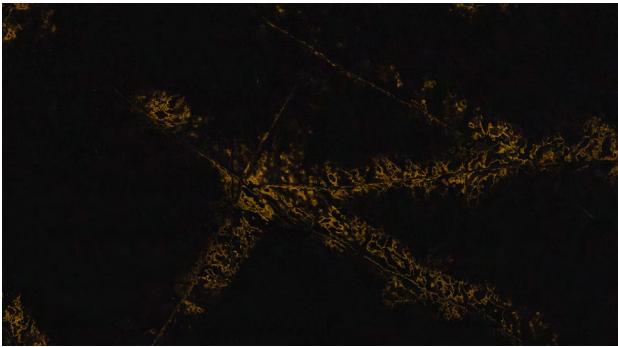
3000x1500x20mm

120"x60"



|                     |  |
|---------------------|--|
| Available Thickness | 8-30mm   |
| Surface Finish      | Polished   |
| Dimensions          | 120"x60"   |
| Weights             | 20mm=220kg(50kg per ㎡)<br>30mm=330kg(75kg per ㎡) |

Available Edge Profiles                      Note:A minimum rodius of 3-4mm is recommended on any edge profile.  
\*The pattern and color may differ from the printed image



|                     |  |
|---------------------|--|
| Available Thickness | 8-30mm   |
| Surface Finish      | Polished   |
| Dimensions          | 120"x60"   |
| Weights             | 20mm=220kg(50kg per ㎡)<br>30mm=330kg(75kg per ㎡) |

Available Edge Profiles                      Note:A minimum radius of 3-4mm is recommended on any edge profile.

\*The pattern and color may differ from the printed image

**GOLD PYROXENE**  
**AB 8010G**  
SURFACE:Polished  
3000x1500x20mm  
120"x60"



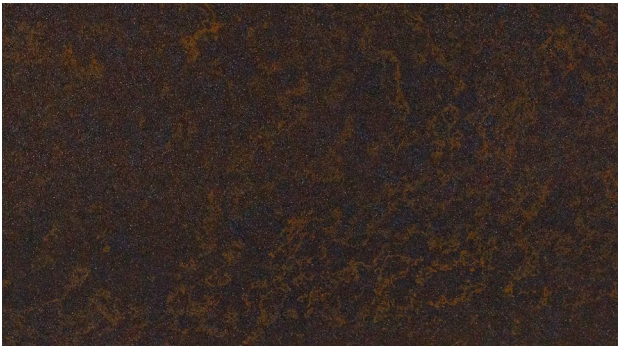


**ICE JADE**  
**AB 8010H**  
SURFACE:Polished  
3000x1500x20mm  
120"x60"



|                     |  |
|---------------------|--|
| Available Thickness | 8-30mm   |
| Surface Finish      | Polished   |
| Dimensions          | 120"x60"   |
| Weights             | 20mm=220kg(50kg per ㎡)<br>30mm=330kg(75kg per ㎡) |

Available Edge Profiles                      Note:A minimum rodius of 3-4mm is recommended on any edge profile.  
\*The pattern and color may differ from the printed image



|                     |  |
|---------------------|--|
| Available Thickness | 8-30mm   |
| Surface Finish      | Polished   |
| Dimensions          | 120"x60"   |
| Weights             | 20mm=220kg(50kg per ㎡)<br>30mm=330kg(75kg per ㎡) |

Available Edge Profiles

Note:A minimum rodius of 3-4mm is recommended on any edge profile.

\*The pattern and color may differ from the printed image

ROSETTE NEBULA

AB 8020L

SURFACE:Leather

3000x1500x20mm

120"x60"



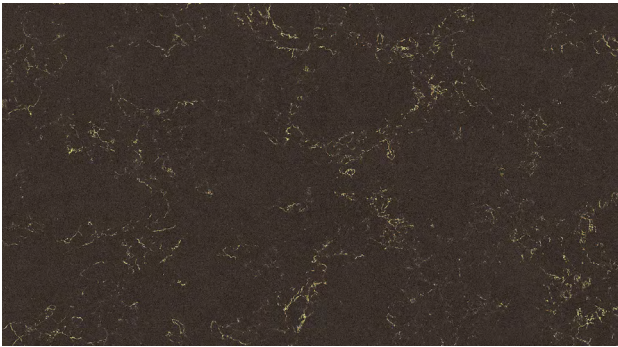
**GRIS ELEGANT**  
**AB 8022L**

SURFACE:Leather  
3000x1500x20mm  
120"x60"



|                     |  |
|---------------------|--|
| Available Thickness | 8-30mm   |
| Surface Finish      | Polished   |
| Dimensions          | 120"x60"   |
| Weights             | 20mm=220kg(50kg per ㎡)<br>30mm=330kg(75kg per ㎡) |

Available Edge Profiles                      Note:A minimum rodius of 3-4mm is recommended on any edge profile.  
\*The pattern and color may differ from the printed image



|                     |  |
|---------------------|--|
| Available Thickness | 8-30mm   |
| Surface Finish      | Polished   |
| Dimensions          | 120"x60"   |
| Weights             | 20mm=220kg(50kg per ㎡)<br>30mm=330kg(75kg per ㎡) |

Available Edge Profiles                      Note:A minimum radius of 3-4mm is recommended on any edge profile.

\*The pattern and color may differ from the printed image

**CALYPSO**  
**AB 6088L**  
SURFACE:Leather  
3000x1500x20mm  
120"x60"





**SNOW FLAKES**

**AB 6014L**

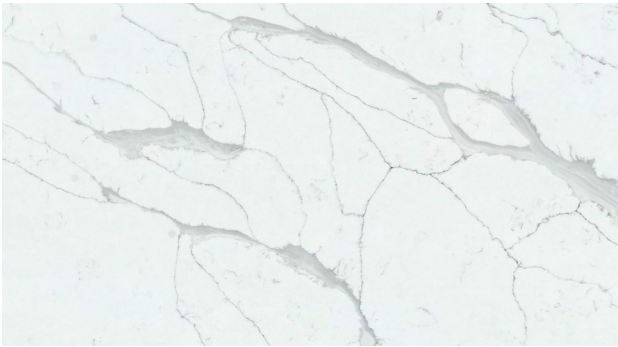
SURFACE:Leather  
3000x1500x20mm  
120"x60"



|                     |  |
|---------------------|--|
| Available Thickness | 8-30mm   |
| Surface Finish      | Polished   |
| Dimensions          | 120"x60"   |
| Weights             | 20mm=220kg(50kg per ㎡)<br>30mm=330kg(75kg per ㎡) |

Available Edge Profiles                      Note:A minimum rodius of 3-4mm is recommended on any edge profile.

\*The pattern and color may differ from the printed image



|                     |  |
|---------------------|--|
| Available Thickness | 8-30mm   |
| Surface Finish      | Polished   |
| Dimensions          | 120"x60"   |
| Weights             | 20mm=220kg(50kg per ㎡)<br>30mm=330kg(75kg per ㎡) |

Available Edge Profiles                      Note:A minimum radius of 3-4mm is recommended on any edge profile.

\*The pattern and color may differ from the printed image

**ICELAND**  
**AB 8108**  
SURFACE:Polished  
3000x1500x20mm  
120"x60"





**BLANCO NEBULOUS**  
**AB 8016**

**SURFACE:**Polished  
**3000x1500x20mm**  
**120"x60"**



|                     |  |
|---------------------|--|
| Available Thickness | 8-30mm   |
| Surface Finish      | Polished   |
| Dimensions          | 120"x60"   |
| Weights             | 20mm=220kg(50kg per ㎡)<br>30mm=330kg(75kg per ㎡) |

Available Edge Profiles                      Note:A minimum rodius of 3-4mm is recommended on any edge profile.  
\*The pattern and color may differ from the printed image



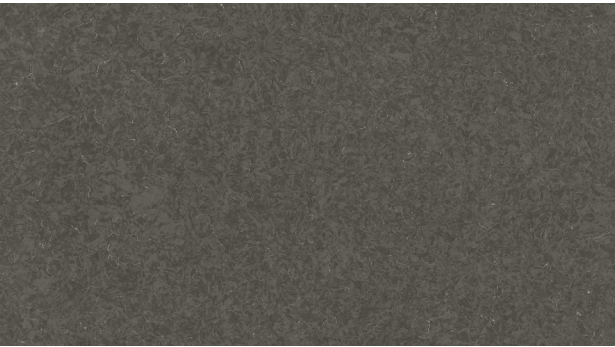
|                     |  |
|---------------------|--|
| Available Thickness | 8-30mm   |
| Surface Finish      | Polished   |
| Dimensions          | 120"x60"   |
| Weights             | 20mm=220kg(50kg per ㎡)<br>30mm=330kg(75kg per ㎡) |

Available Edge Profiles                      Note:A minimum radius of 3-4mm is recommended on any edge profile.

\*The pattern and color may differ from the printed image

**CALACATTA CRACK**  
**AB 8008**  
SURFACE:Polished  
3200x1600x20mm  
120"x60"





**OCEAN**  
**AB 6019**  
SURFACE:Polished  
3000x1500x20mm  
120"x60"

|                     |  |
|---------------------|--|
| Available Thickness | 8-30mm   |
| Surface Finish      | Polished   |
| Dimensions          | 120"x60"   |
| Weights             | 20mm=220kg(50kg per ㎡)<br>30mm=330kg(75kg per ㎡) |

Available Edge Profiles                      Note:A minimum rodius of 3-4mm is recommended on any edge profile.  
\*The pattern and color may differ from the printed image



|                     |  |
|---------------------|--|
| Available Thickness | 8-30mm   |
| Surface Finish      | Polished   |
| Dimensions          | 120"x60"   |
| Weights             | 20mm=220kg(50kg per ㎡)<br>30mm=330kg(75kg per ㎡) |

Available Edge Profiles                      Note:A minimum rodius of 3-4mm is recommended on any edge profile.

\*The pattern and color may differ from the printed image

**FLYING SWALLOW**  
**AB 6183**  
SURFACE:Polished  
3000x1500x20mm  
120"x60"

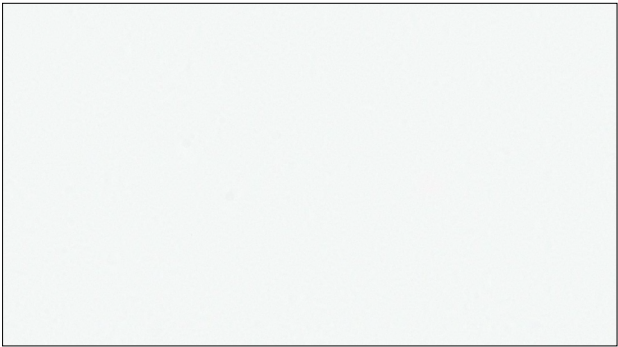


**BLANCO SHITAKE**  
**AB 6025**

SURFACE:Polished  
3000x1500x20mm  
120"x60"

|                     |  |
|---------------------|--|
| Available Thickness | 8-30mm   |
| Surface Finish      | Polished   |
| Dimensions          | 120"x60"   |
| Weights             | 20mm=220kg(50kg per ㎡)<br>30mm=330kg(75kg per ㎡) |

Available Edge Profiles                      Note:A minimum rodius of 3-4mm is recommended on any edge profile.  
\*The pattern and color may differ from the printed image

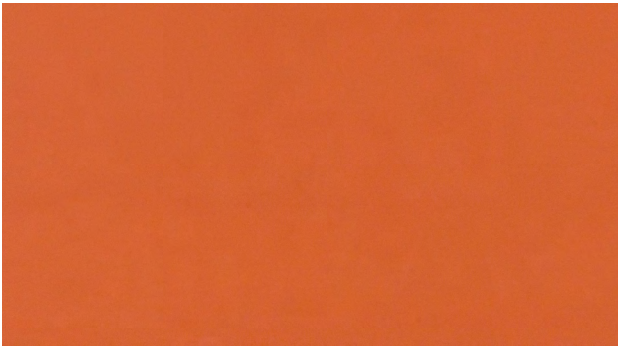


|                     |  |
|---------------------|--|
| Available Thickness | 8-30mm   |
| Surface Finish      | Polished   |
| Dimensions          | 120"x60"   |
| Weights             | 20mm=220kg(50kg per ㎡)<br>30mm=330kg(75kg per ㎡) |

Available Edge Profiles                      Note:A minimum rodius of 3-4mm is recommended on any edge profile.

\*The pattern and color may differ from the printed image

**STATUARIO**  
**AB 3030**  
SURFACE:Polished  
3000x1500x20mm  
120"x60"



**MAPLE FOREST**  
**AB 3129**

SURFACE:Polished  
3000x1500x20mm  
120"x60"

|                     |  |
|---------------------|--|
| Available Thickness | 8-30mm   |
| Surface Finish      | Polished   |
| Dimensions          | 120"x60"   |
| Weights             | 20mm=220kg(50kg per ㎡)<br>30mm=330kg(75kg per ㎡) |

Available Edge Profiles                      Note:A minimum rodius of 3-4mm is recommended on any edge profile.  
\*The pattern and color may differ from the printed image



|                     |  |
|---------------------|--|
| Available Thickness | 8-30mm   |
| Surface Finish      | Polished   |
| Dimensions          | 120"x60"   |
| Weights             | 20mm=220kg(50kg per ㎡)<br>30mm=330kg(75kg per ㎡) |

Available Edge Profiles                      Note:A minimum radius of 3-4mm is recommended on any edge profile.

\*The pattern and color may differ from the printed image

**37° PREMIUM GRAY**  
**AB 3120**  
SURFACE:Polished  
3000x1500x20mm  
120"x60"



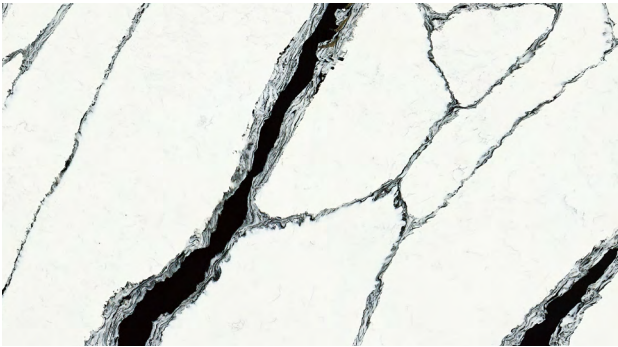
**18° STANDARD GREY**  
**AB 3137**

SURFACE:Polished  
3000x1500x20mm  
120"x60"



|                     |  |
|---------------------|--|
| Available Thickness | 8-30mm   |
| Surface Finish      | Polished   |
| Dimensions          | 120"x60"   |
| Weights             | 20mm=220kg(50kg per $\text{m}^2$ )<br>30mm=330kg(75kg per $\text{m}^2$ ) |

Available Edge Profiles                      Note:A minimum rodius of 3-4mm is recommended on any edge profile.  
\*The pattern and color may differ from the printed image

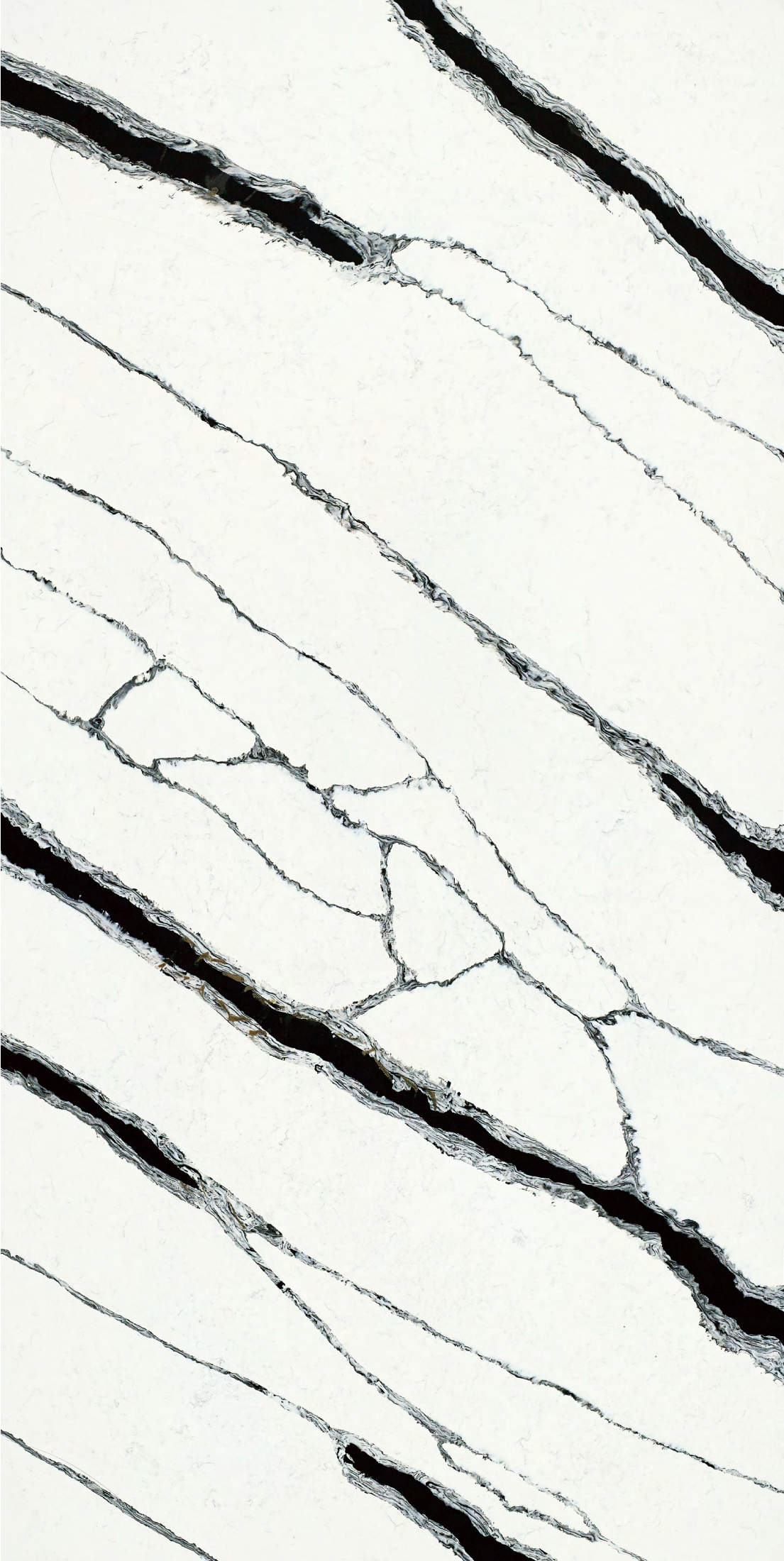


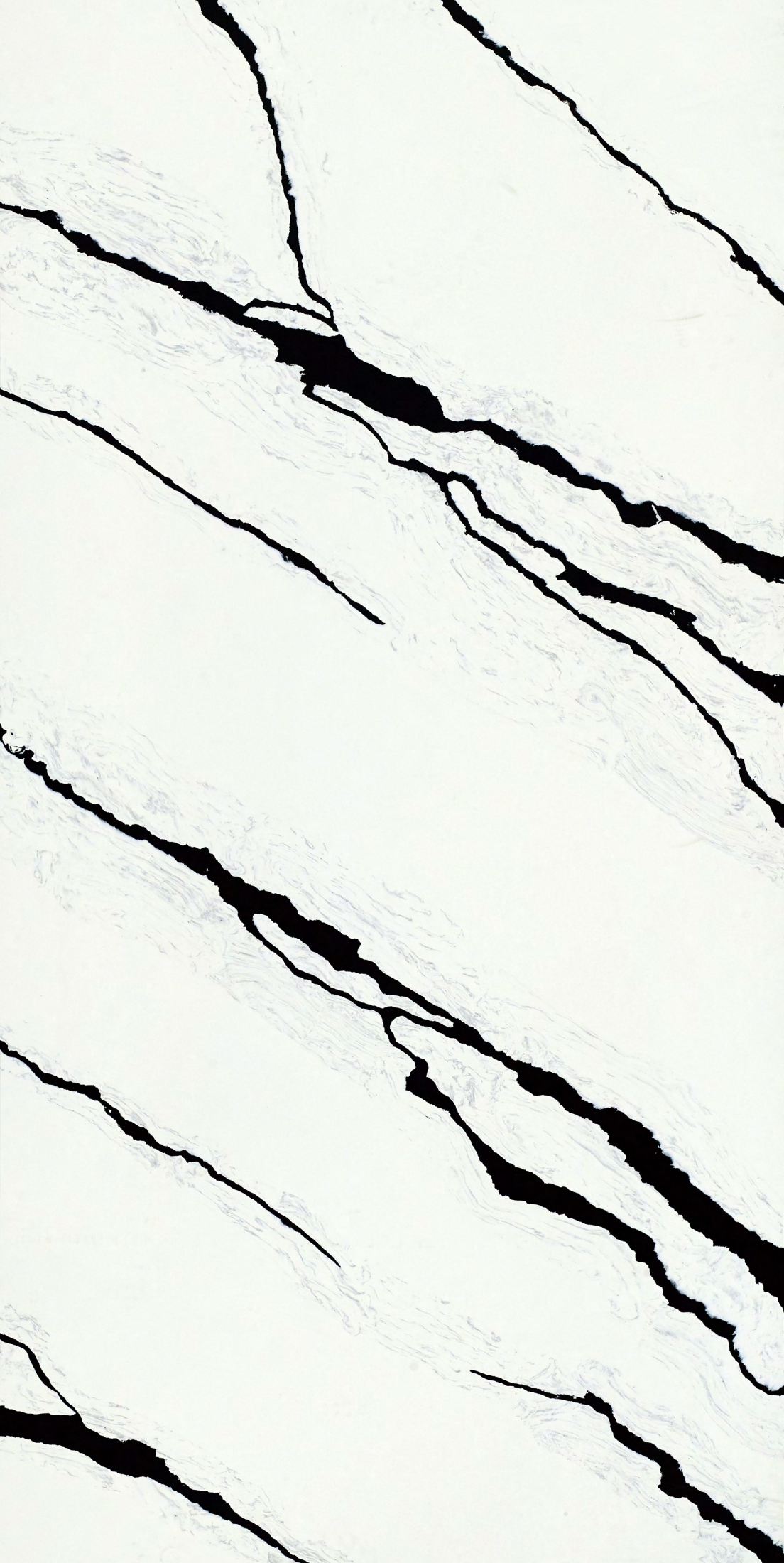
|                     |  |
|---------------------|--|
| Available Thickness | 8-30mm   |
| Surface Finish      | Polished   |
| Dimensions          | 120"x60"   |
| Weights             | 20mm=220kg(50kg per ㎡)<br>30mm=330kg(75kg per ㎡) |

Available Edge Profiles      Note:A minimum radius of 3-4mm is recommended on any edge profile.

\*The pattern and color may differ from the printed image

**PANDA WHITE**  
**AB 9001**  
SURFACE:Polished  
3200x1600x20mm  
120"x60"





**MORIE**  
**AB 9002**  
SURFACE:Polished  
3200x1600x20mm  
120"x60"



|                     |  |
|---------------------|--|
| Available Thickness | 8-30mm   |
| Surface Finish      | Polished   |
| Dimensions          | 120"x60"   |
| Weights             | 20mm=220kg(50kg per ㎡)<br>30mm=330kg(75kg per ㎡) |

Available Edge Profiles                      Note:A minimum rodius of 3-4mm is recommended on any edge profile.  
\*The pattern and color may differ from the printed image



|                     |  |
|---------------------|--|
| Available Thickness | 8-30mm   |
| Surface Finish      | Polished   |
| Dimensions          | 120"x60"   |
| Weights             | 20mm=220kg(50kg per ㎡)<br>30mm=330kg(75kg per ㎡) |

Available Edge Profiles                      Note:A minimum rodius of 3-4mm is recommended on any edge profile.

\*The pattern and color may differ from the printed image

**CROATIA GREY**  
**AB 6196**  
SURFACE:Polished  
3000x1500x20mm  
120"x60"